

Cobham Hall Residential Programme

emerald[®]
cultural institute

English Language • Professional Development



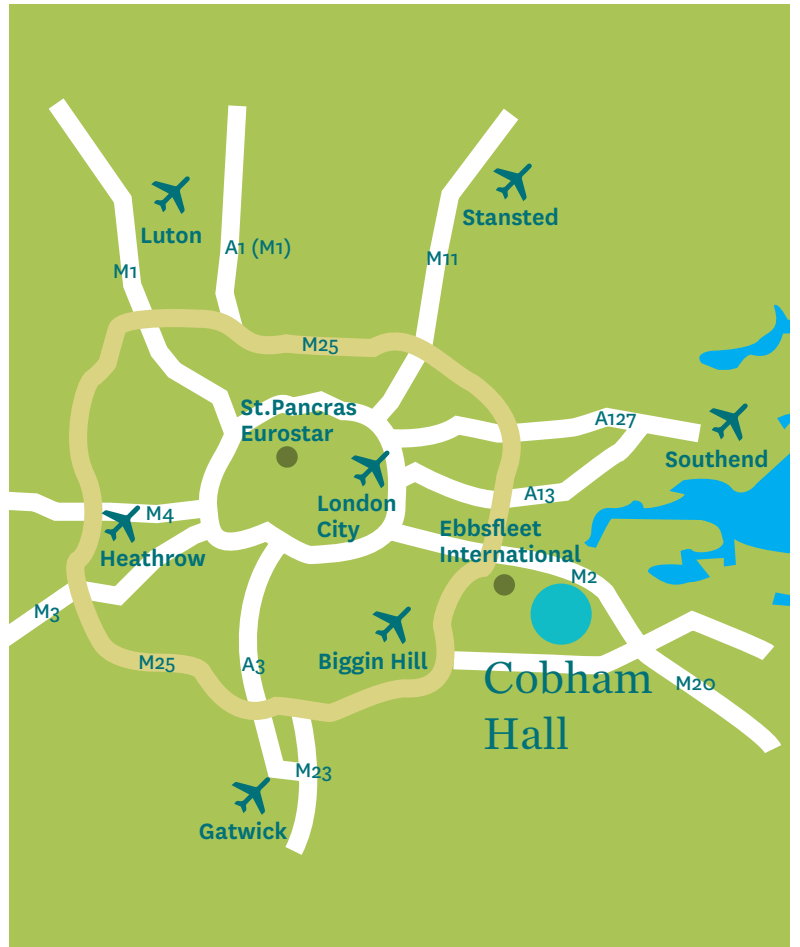
Location

Cobham Hall – Emerald Cultural Institute (UK)

Cobham Hall Independent School
Cobham,
Kent,
DA12 3BL,
UK

Cobham Hall is located in the beautiful county of Kent, south east of London. Central London is 50 kilometres away, only 20 minutes by train and 50 minutes by coach.

The historic town of Rochester is 10 minutes away. Rochester is famed as the birthplace of Charles Dickens and home to the second oldest Cathedral in the UK. A short taxi ride will take you to Sole Street train station with easy access to London and nearby Kentish towns such as Canterbury, Maidstone and Chatham; a soon-to-be World Heritage Site.



Transport

Cobham Hall is ideally located for access to all the major London airports and Eurostar from Europe.

By Air

Gatwick Airport – 45 mins

Stansted Airport – 1 hour

London Heathrow Airport – just over an hour

London City Airport – 40 mins

Eurostar Trains

Ebbsfleet International (10 mins from Cobham) –
just over 2 hours to Paris/Brussels

Accommodation on Campus



Campus

Originally an English stately home dating from the 16th century, Cobham Hall is regarded as one of England's finest historic houses. It is set in 150 acres of beautiful parkland. The extensive grounds provide plenty of opportunities for outdoor sports and games, walking around the gardens or just relaxing in the sunshine.



Accommodation on Campus

Students will stay in one of three boarding houses.

Main Hall contains 2, 3, 4, 5 & 6 bedded rooms and shared bathrooms.

Brooke House contains single rooms with shared bathrooms (approx. 40 beds)

Bligh House contains single or twin rooms with shared bathrooms (approx. 40 beds)

All boarding houses have large, comfortable common rooms with televisions and DVD players. These cosy rooms give students an opportunity to relax during their free time and are perfect for students to get together and make new friends.

Entrance to the boarding houses is by secure key codes and each room has a lockable wardrobe space in which students can keep their valuables (students should bring a padlock for this)

WiFi is available



Facilities on Campus

Meals

Accommodation is full-board with packed lunches on full day excursions. The dedicated chefs and kitchen staff at Cobham Hall make sure that meals are varied and nutritious. We can cater for most special dietary requirements (such as gluten free, vegan, etc.). Please notify the school at the time of booking.

Laundry Facilities and Linen

Students can have their personal laundry washed once a week by school staff. Students will be told which day their laundry is collected. Bed linens are changed every Sunday.



Sports and Recreation

Cobham Hall has fantastic sports and leisure facilities. A full activity programme with lots of exciting, varied choices ensures that students can participate with enthusiasm.

Large and well-equipped sports centre

Dance studio

Drama studio

Art rooms

Cooking facilities for home economics

Tennis courts

Several playing fields and sports pitches

Indoor heated swimming pool

Computer room

150 acres of beautiful parkland

Classes

All classrooms are spacious, airy and have either interactive whiteboards or overhead projectors.



Sample Programme

Week One

Week 1	Sunday	Monday	Tuesday	Wednesday	Thursday	Friday	Saturday
08:00	Breakfast	Breakfast	Breakfast	Breakfast	Breakfast	Breakfast	Breakfast
09:00	Arrival	Placement Test	English Lesson	English Lesson	English Lesson	English Lesson	Full Day Excursion: London Eye & River Boat Trip
12:30		Lunch	Lunch	Lunch	Lunch	Lunch	
14:00		Sports options Or Arts and Crafts options	Half Day Excursion: Rochester A walk into history Charles Dickens	Sports options Or Dance/Drama options	Half Day Excursion: Raft building Mote Park Watersports Centre	Sports options Or Arts/Cooking options	
17:30		Personal Time		Personal Time		Personal Time	
18:30	Dinner	Dinner	Dinner	Dinner	Dinner	Dinner	
20:00	Unpack and settle in	Team Quiz	Fashion Show	Scavenger Hunt	Movie	DJ Themed Dance Party	
22:30	Lights Out	Lights Out	Lights Out	Lights Out	Lights Out	Lights Out	Lights Out

Week Two

Week 2	Sunday	Monday	Tuesday	Wednesday	Thursday	Friday	Saturday
08:00	Breakfast	Breakfast	Breakfast	Breakfast	Breakfast	Breakfast	Breakfast
09:00	On campus Team games	English Lesson	English Lesson	English Lesson	English Lesson	English Lesson	Full Day Excursion: Tower of London & Crown jewels
12:30	Lunch	Lunch	Lunch	Lunch	Lunch	Lunch	
14:00	On campus Team games	Sports options Or Arts and Crafts options	Half Day Excursion: Leeds Castle	Sports options Or Dance/Drama options	Half Day Excursion: Canterbury	Sports options Or Arts/Cooking options	
17:30	Personal Time	Personal Time		Personal Time		Personal Time	
18:30	Dinner	Dinner	Dinner	Dinner	Dinner	Dinner	
20:00	Celebrity Bingo	Music Quiz	X Factor	Latino Night	Team Challenge	DJ Themed Dance Party	
22:30	Lights Out	Lights Out	Lights Out	Lights Out	Lights Out	Lights Out	Lights Out

Classes and timetable

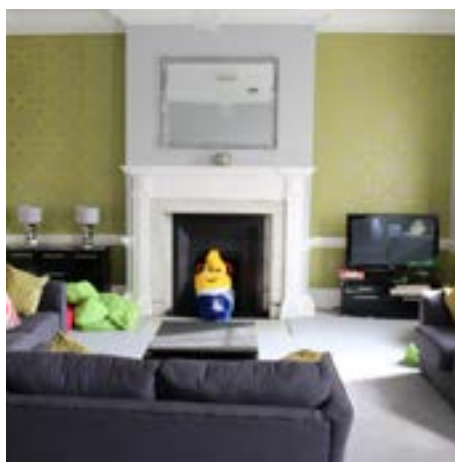
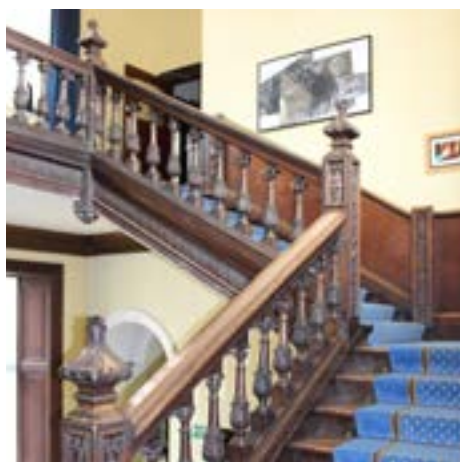
The Junior Cobham Hall programme offers one full day excursion and two half day excursions per week. The full day excursion will be to London and students will have the opportunity to visit some of the capital's most exciting attractions, including the London Eye, the Tower of London, Buckingham Palace, St Paul's Cathedral and Westminster Abbey. Half day excursions will be to places of interest and fun in the surrounding area. There is a lot to see and experience, including historic Canterbury, Rochester and the World Heritage Dockyards at Chatham. A local watersports centre also gives students the chance to try their hands at raft building!

Afternoon activities on campus will enable students to participate in a choice of sports, including football, volleyball, touch rugby, tennis, swimming, cricket, basketball, badminton baseball and rounders.

Other afternoon activities will include dance, drama, cooking and a variety of arts and crafts.

Students come together in the evenings to enjoy a range of lively events including talent and fashion shows, discos and karaoke, quizzes and scavenger hunts.

General and Practical Information



Medical Information

All students studying in England should obtain appropriate medical insurance in their own country before departure. Students travelling from EU countries should bring their European Health Insurance with them. Non-EU students should travel with a copy of their insurance policy.

Our on-site team will be happy to assist with making the arrangements for students who require medical attention. We would ask that parents or group leaders inform us at the time of booking about any conditions or relevant medical information which we should be aware of, so we can inform our staff.

Students should cover the cost of transport if required for any medical visits. Group leaders are required to accompany their students to doctors/hospitals. A member of staff will accompany individual students. A medical centre is located approximately 5 minutes by car from the school.

Smoking/Alcohol/Illegal Substances

Smoking is prohibited inside the school property. Alcohol is strictly forbidden on campus. Consumption or possession of alcohol or any illegal substances will result in immediate expulsion.

Health and Safety

As part of their welcome orientation students and group leaders are required to attend a short briefing on the safety regulations. The briefing includes an introduction to life in the school, security of personal property and fire safety. Group leaders and students will also receive details of First Aid procedures, which they should follow in the event of an accident.

Emerald Student Identity Card

All students are issued with an Emerald Cultural Institute student ID card on their arrival. Students should carry their student ID with them at all times and may be asked to produce the card by the security or residential staff.

Safety

We advise all students not to carry large amounts of cash, passport or travel documents on their person during their stay.

Student Supervision

Our team of Managers, Teachers and Activity leaders are there to provide the highest level of service and ensure that students enjoy every aspect of their stay with us. In orientation students meet residence and activity staff. Minors under 18 travelling unaccompanied are assigned a specific member of staff who will be their reference point for the duration of their stay and who will meet them on a daily basis.

Discipline and Breach of Conduct

If students' behaviour or conduct is unsatisfactory or in breach of school regulations, they will be subject to the School's disciplinary procedures. A serious breach of conduct may result in expulsion.

Emerald Cultural Institute (UK)
Cobham Hall Independent School
Cobham,
Kent,
DA12 3BL,
UK

Central Bookings Office:

Emerald Cultural Institute
10 Palmerston Park
Rathgar
Dublin
Do6 H9X8
Ireland

t +353 1 4973361
f +353 1 4975008
e emerald@eci.ie
www.eci.ie